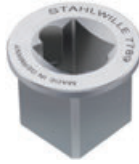


7789 Square drive adaptor

- 1/2" socket x 3/4" plug (12.5 x 20)



Code	L mm	∅ mm	ΔΔ g
58 52 1089	23.5	29	40

7789-2 Square drive adaptor

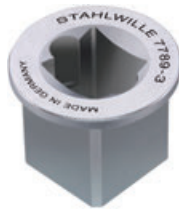
- 3/4" socket x 1 1/2" plug (20 x 40)



Code	L mm	∅ mm	ΔΔ g
58 52 3089	44	60	380

7789-3 Square drive adaptor

- 1" socket x 1 1/2" plug (25 x 40)



Code	L mm	∅ mm	ΔΔ g
58 52 4089	44	60	280

7789-4 Square drive adaptor

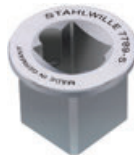
- 1/4" socket x 1/2" plug (6.3 x 12.5)



Code	L mm	∅ mm	ΔΔ g
58 52 4090	15.5	29	25

7789-5 Square drive adaptor

- 3/8" socket x 1/2" plug (10 x 12.5)



Code	L mm	∅ mm	ΔΔ g
58 52 4091	15.5	29	28

734K Calibrating square drive insert tools

- without a ball or pin (so not suitable for bolt tightening)
- optimum measuring results during calibration thanks to reduced lateral forces



Code	size	"	mm	b mm	h mm	S mm	ΔΔ g
58 24 3004	4	1/4	9x12	20	16.7	17.5	76
58 24 3005	5	3/8	9x12	20	16.7	17.5	76
58 24 3012	12	3/8	14x18	27	21.5	25	199
58 24 3020	20	1/2	14x18	27	21.5	25	218
58 24 3040	40	3/4	14x18	40	29.3	25	410
58 24 1100	100	3/4	22x28	43	29.3	55	907

70VK Calibrating square drive units

- without a ball or pin (so not suitable for bolt tightening)
- optimum measuring results during calibration thanks to reduced lateral forces



Code	size	for No	a "	b "	L mm	ΔΔ g
5901 1014	11	734/4	3/8	1/4	24.7	12
5901 1003	3	735/5	3/8	3/8	27.6	17
5901 1012	12	734/10; 734/20	1/2	3/8	32.5	34
5901 1011	502 1/2	734/20	1/2	1/2	36.9	60
5901 1008	8	734/40; 734/80; 734/100	3/4	3/4	52.2	138