



## Complete calibration system

**7706**

Art.No. **96521070**

GTIN **4018754179152**

Model **7706-10PC**

### Label.

Complete calibration system Measuring r.2-1000N-m for transducers

### Features.

- Measurement without displacement of the force application point
- Due to a special force transmission system, the mechanical calibration device no. 7791 avoids a displacement of the point of application of force during the calibration process.
- driven by the handwheel, the lever mounted below the test rail is moved linearly by a spindle
- the linear movement is converted into a rotary movement which acts on the transducer
- the torque spanner to be calibrated remains constant in its position during the entire calibration process
- in this way, measurement errors resulting from a shift of the point of application of the force are avoided
- the torque spanner is automatically aligned horizontally by a low-friction ball bushing
- another ball bushing ensures friction-free support of the torque wrench
- the resulting reduction of the transverse forces on the transducer and the friction on the torque wrench support leads to a reduction of the measuring errors.
- Patents pending
- Included in delivery:
  - Transducer
  - Square adapter
  - USB adapter and cable for transferring measurement data to a personal computer
  - Administration software for calibration certificates

### Advantages.

Measurement without shifting the point of application of force

## Technical Attributes.

Range N-m	2-1000 N-m
Width mm (B)	800 mm
Height mm (h)	520 mm
Length mm (L)	1200 mm

## Logistics data.

Depth mm (IFS)	1200
Width mm (IFS)	800
Height mm (IFS)	520
Length (packed, mm)	1200
Width (packed, mm)	800
Height (packed, mm)	520
Volume (packed, dm3)	499.2 dm3
Art. no.	96521070
Weight (gross, kg)	75,600
Weight PAP (kg)	0,000
Weight PVC (kg)	0,000
GTIN	4018754179152
Country of origin	GERMANY
Region of origin	Nordrhein-Westfalen
WEEE/ElektroG	Großgeräte B2B
Customs tariff no.	90318080
Packing standard	1
Weight	75600 g

## Parts list.



83070026  
Packing material



83070016  
Packing material



83070006  
Packing material



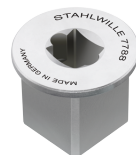
81320002  
Plastic case



11030010  
Adapter



58521089  
Square drive adaptor



58521088  
Square drive adaptor



58521087  
Square drive adaptor



52110054  
Cable for No.7728



81500003  
Plastic case, empty



58243040  
Calibrating square  
drive insert tool



58243020  
Calibrating square  
drive insert tool



58243005  
Calibrating square  
drive insert tool



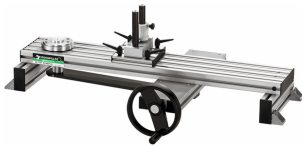
58243004  
Calibrating square  
drive insert tool



83071030  
Inlay for plastic case



52110191  
Extension unit for  
No.7791, 7794-1 and  
7794-2 up to 1000 N·m



52110091  
Mechanical calibration  
device



52110051  
Jack cable



52111057  
USB adaptor

## Variants.

Art. no.	Art. no. (ERP)	Description	GTIN
96521068	7706-8PC	Complete calibration system Measuring r.1-10N·m for transducers	4018754179138
96521069	7706-9PC	Complete calibration system Measuring r.2-100N·m for transducers	4018754179145
96521070	7706-10PC	Complete calibration system Measuring r.2-1000N·m for transducers	4018754179152
96521074	7706-11PC	Complete calibration system Measuring r.20-3000N·m for transducers	4018754180967

## GTIN-Code.



4 018754 179152

