

Specimen fixtures

*Use the specimen fixtures below under a test force of 1kgf/9.81N only (except for round table, V-anvil, and manual XY stage: 50x50mm).

810-013 Sheet specimen table

Prevents variations of hardness results due to flexure and wrinkling during measurement of sheets 0.5mm thick or less (e.g. Scalpel blades, etc.).



810-015-01 Wire specimen table (vertical type)

Clamps pin-shaped specimens of 0.4 to 3mm diameter or less in a chuck (e.g. Wire of steel or copper, etc.).



810-014-01 Wire specimen table (horizontal type)

Holds a thin specimen of 0.3 to 3mm for measuring on a side face (e.g Wire, piano wire, etc.).



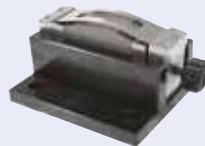
810-019 Tilting specimen vise

Levels the specimen measurement face to prevent variations of indentation shape, with an opening width of 37mm, tilt angle of $\pm 15^\circ$, and rotation angle of $\pm 25^\circ$.



810-085 Sheet specimen holder

Enables securing of very thin or narrow specimens like foil or fine wire.



Resin mold specimen tables

- 810-650-1: $\phi 25.4 \pm 0.5\text{mm}$; specimen height: 9-39mm
- 810-650-2: $\phi 30 \pm 0.5\text{mm}$; specimen height: 9-39mm
- 810-650-3: $\phi 31.75 \pm 0.5\text{mm}$; specimen height: 9-39mm
- 810-650-4: $\phi 38.1 \pm 0.5\text{mm}$; specimen height: 9-39mm
- 810-650-5: $\phi 40 \pm 0.5\text{mm}$; specimen height: 9-39mm



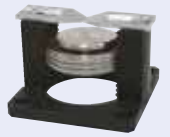
810-012 Manual XY stage (XY range: 50x50mm)

Allows specimen positioning up to 50mm in the X- and Y-directions. Use it with the test force 50kgf or below.



810-020 Adjustable specimen table (Specimen thickness of 30mm or less)

Allows proper alignment of the sample surface and the indenter axis when parallelism of the sample is poor. It cannot be used with automatic hardness testing systems.



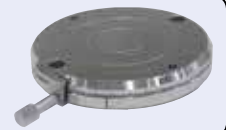
810-095 Rotary tilting specimen vise

In cases where top and bottom surfaces of the specimen are not parallel, the tilting rotary specimen table's adjuster and standard accessory hand press can be used to make adjustments (adjustment range: $\pm 3^\circ$) so the top surface of the specimen is perpendicular to the indenter shaft of the hardness testing machine. When attached to the testing machine, the specimen surface can be rotated 360° (in 2° increments).



810-018 Rotary table (Minimum graduation 1°)

The specimen fixed on the table can be rotated for convenient measurement.



810-037 (for HV) Round table (Diameter: 180mm) 810-038 (for HV) Round table (Diameter: 250mm)



810-040 (for HV) V anvil (large) (Outside diameter: $\phi 40\text{mm}$, Groove width: 30mm) 810-041 (for HV) V anvil (small) (Outside diameter: $\phi 40\text{mm}$, Groove width: 6mm)



810-016 Standard vice (Open width 51mm)



810-017 Special vice (Open width: 100mm)

Can clamp specimens of up to 100mm.



Other optional accessories

937179T (for HV-110/120) Foot switch

Switch for starting hardness testing. With a series of test operations such as Ocular*/footswitch/turret switch/vertical handle operation, the test machine can be operated without using touch panel. *Zero setting of measuring microscope (Ocular) can be performed by pressing and holding the Ocular switch instead of touch panel operation.

02ATE760 (for HM-210/220) Table

*For testing machine and PC (1800Wx900Dx740Hmm)

998923 System rack (vertical)

*For PC

1AAC702 (for HV Series) Stand for testing machine



810-641 (for HM Series) 11AAC719 (for HV Series) Vibration isolator

Only for the testing machines

810-644 Wing for vibration isolator

*For 810-641 Vibration isolator