

## Anreiß-Messschieber

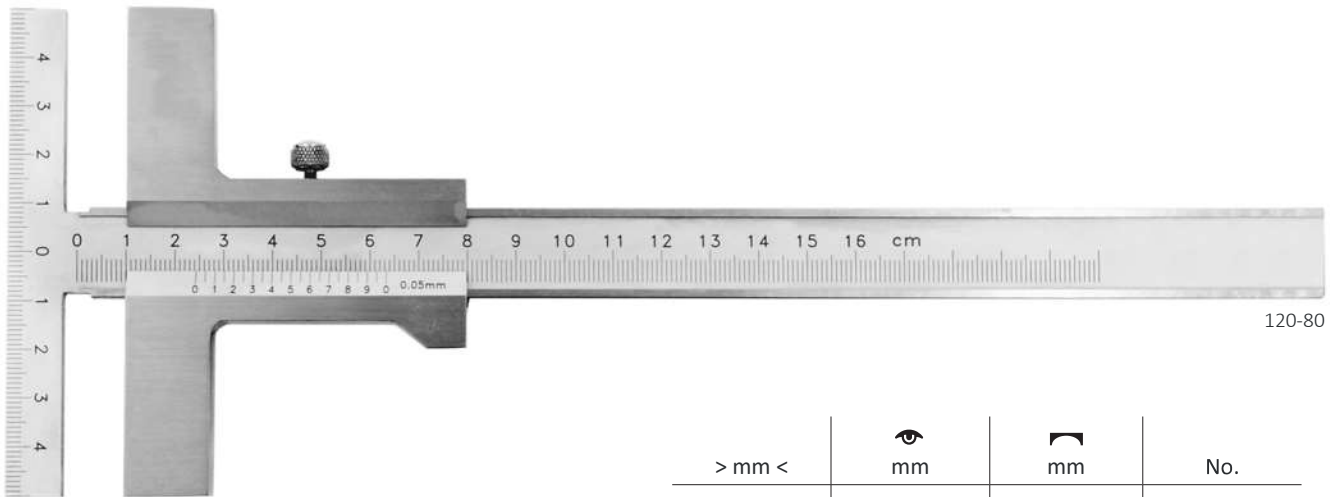
### T-Form

- DIN 862
- rostfreier Stahl
- Nonius und Skala mattverchromt
- inkl. Etui



## Mark-out vernier caliper

### T-form

- DIN 862
- stainless steel
- satin chromed reading parts
- incl. box



120-80

> mm <	 mm	 mm	No.
0-160	0,05	100	120-80
0-250	0,05	140	120-81
0-300	0,05	160	120-82
0-400	0,05	160	120-84
0-500	0,05	160	120-83

## Präzisions-Streichmaße

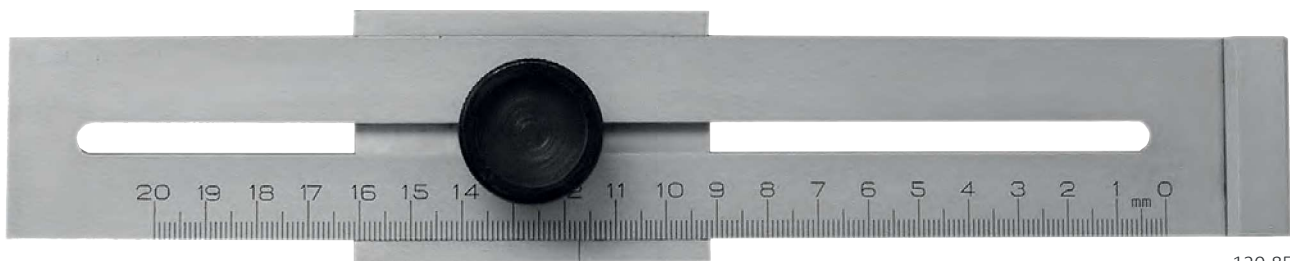
### zum einfachen Anreiß von Werkstücken

- rostfreier Stahl
- mit gelasierter mm-Teilung auf der Schiene
- Anreißkante gehärtet
- verchromt
- Feststellschraube aus Metall


## Measuring gauge



### for easy scribing of workpieces

- stainless steel
- with lasered scale graduations
- with hardened lead edges
- chromed
- metal lock screw



120-85

> mm <	 mm	No.
200	1,0	120-85
250	1,0	120-87
300	1,0	120-86

> mm <    Messbereich    Range  
    Ablesung    Reading  
    Brückenlänge    Length of base