

DIGI ULISSE I/E

Digital sliding gauge for internal/external grooves
Calibro a corsoio per gole interne/esterne

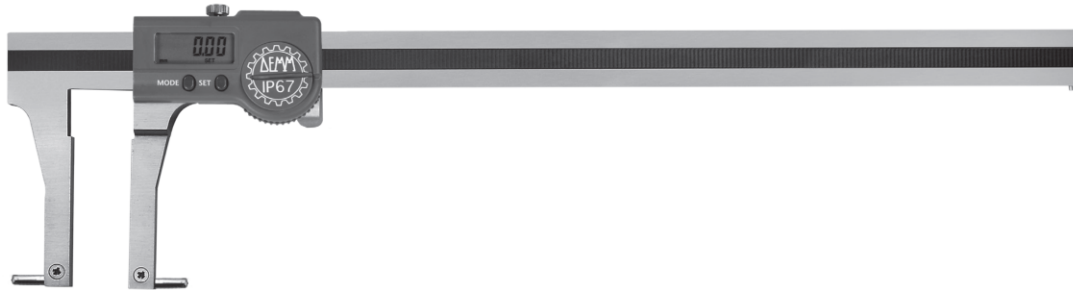


GAUGES FOR GROOVES CALIBRI PER GOLE



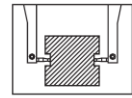
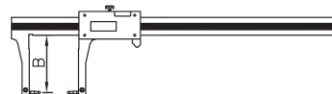
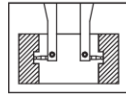
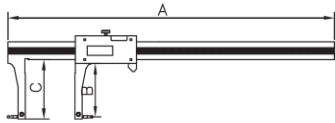
- Digital sliding gauge for internal/external grooves
- In hardened stainless steel
- Interchangeable rods

- Calibro a corsoio per gole interne/esterne
- In acciaio inox tempre
- Puntali intercambiabili

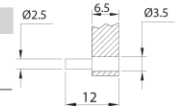


Internal application
Applicazione per interni

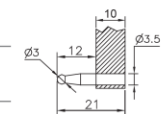
External application
Applicazione per esterni



Article	Range	A	B	C	Bar Section	Resolution	Accuracy	Code	Kg
DIGI ULISSE I/E 250	I 24-250	332	52	64	16X4,5	0,01	0,02	00792	0,260
	E 0-210	332	61						



Article	Range	A	B	C	Bar Section	Resolution	Accuracy	Code	Kg
DIGI ULISSE I/E 400	I 44-400	470	96	103	17 x 5	0,01	0,03	00793	0,560
	E 0-320	470	100						
DIGI ULISSE I/E 500	I 44-500	570	96	103	17 x 5	0,01	0,03	00794	0,650
	E 0-420	570	100						
DIGI ULISSE I/E 650	I 44-650	720	96	103	22 x 5	0,01	0,04	00192	0,740
	E 0-570	720	100						



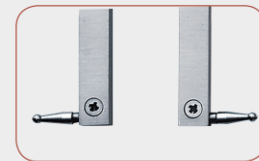
STANDARD DI SERIE

Standard for Digi Ulisse I/E 250 e Digi Ulisse P I/E 250
Di serie per Digi Ulisse I/E 250 e Digi Ulisse P I/E 250



Article	Code
TS 025	00210

Standard for Digi Ulisse I/E 400 - 500 - 650 and Digi Ulisse P I/E 350 - 450
Standard per Digi Ulisse I/E 400 - 500 - 650 e Digi Ulisse P I/E 350 - 450



Article	Code	Article	Code
BAR60	02000	TS3	02030

FOR INTERCHANGEABLE ENDS SEE PAG. 134
PER I TERMINALI INTERCAMBIABILI VEDERE A PAG. 134